



CHANGE THE EYES THAT SEE REALITY

Systemic violence and domestic violence



How do we change the lens that we perceive reality.

- Violence is one of the leading causes of mortality globally. WHO, 2014
- South Africa is ranked 4th on the Global Murder List. The Globalist, 2018
- Child murders since 1994 over 10,000. Institute for Race Relations, 2017
- More children victims of domestic violence.
- More boys and men reporting domestic violence
- Need to unpack who is the victim and/or perpetrator
- How do we affirm the role of invisible violence as it relates to domestic violence
- How do we disrupt the denial regarding domestic violence

Violence and Trauma

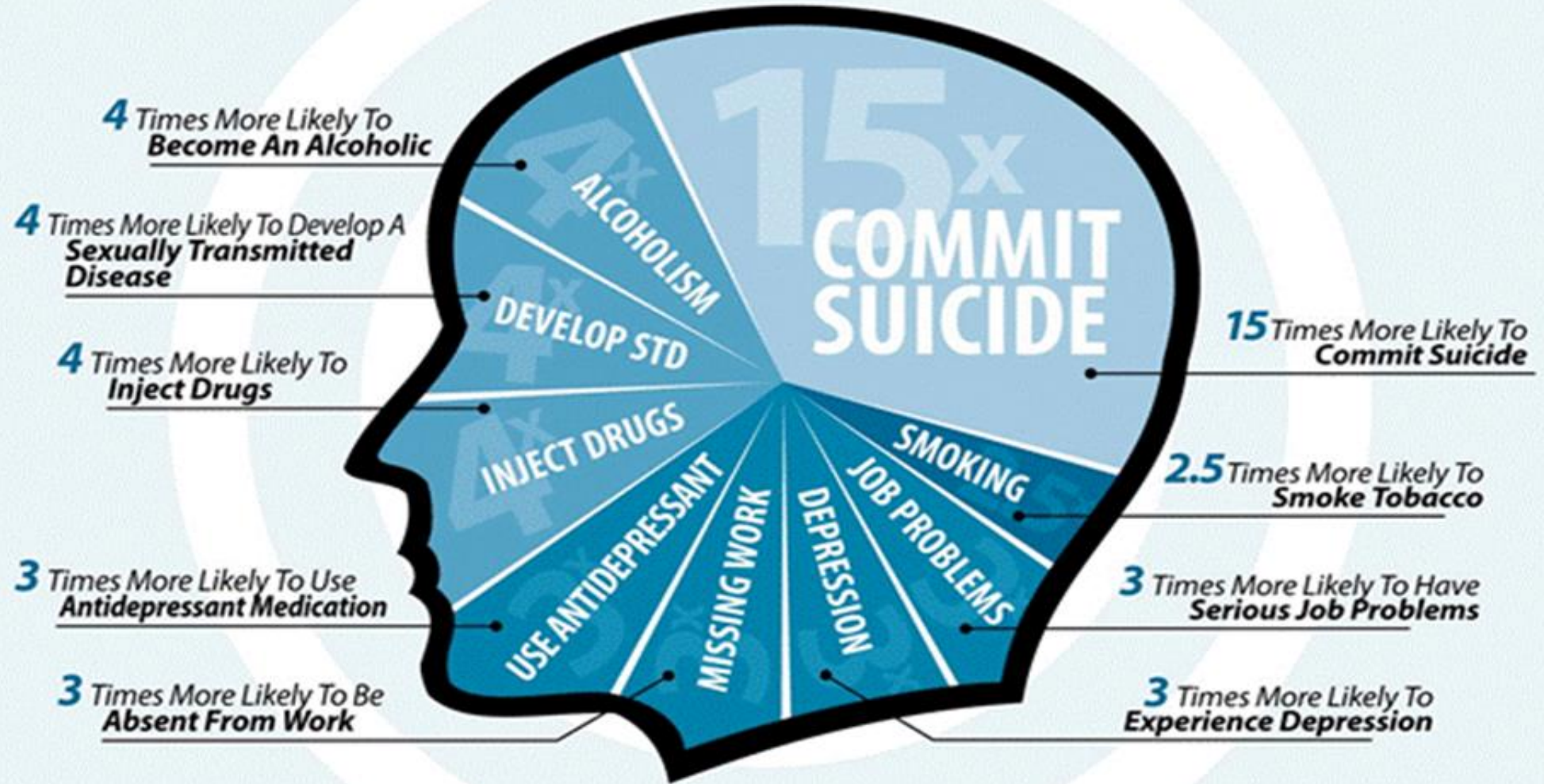
Violence

- Multiple definitions
- Highly contested
- Visible and Invisible -Henkeman
- Self-directed, interpersonal & collective violence - WHO

Trauma

- Multiple
- Complex
- Continuous
- Intergenerational
- Transgenerational

PEOPLE WHO HAVE EXPERIENCED TRAUMA ARE:





A learner's impression of life on her community:

Note:

1. The shooter and victim have no eyes.
2. The cat has no legs and is extremely angry
3. The helicopter is hovering over the community
4. The ambulance is on the outskirts of the community.
5. The shooter is coloured in blue
6. Sunshine but also clouds
7. The little girls has no hands

26 high risk areas in the Western Cape

- Mitchells plain, Khayelitsha, Elsiesriver, Delft, Belhar, Nyanga, Manenberg, Philippi, Philippi east, Bishop Lavis, Kraaifontein, Worcester, Paarl East, Eersteriver, Kleinvlei, Mfuleni, Saldanha, Vredenburg, Ravensmead, Grassy Park, Ocean view, Cloetesville, Athlone Atlantis, Gugulethu, Steenberg